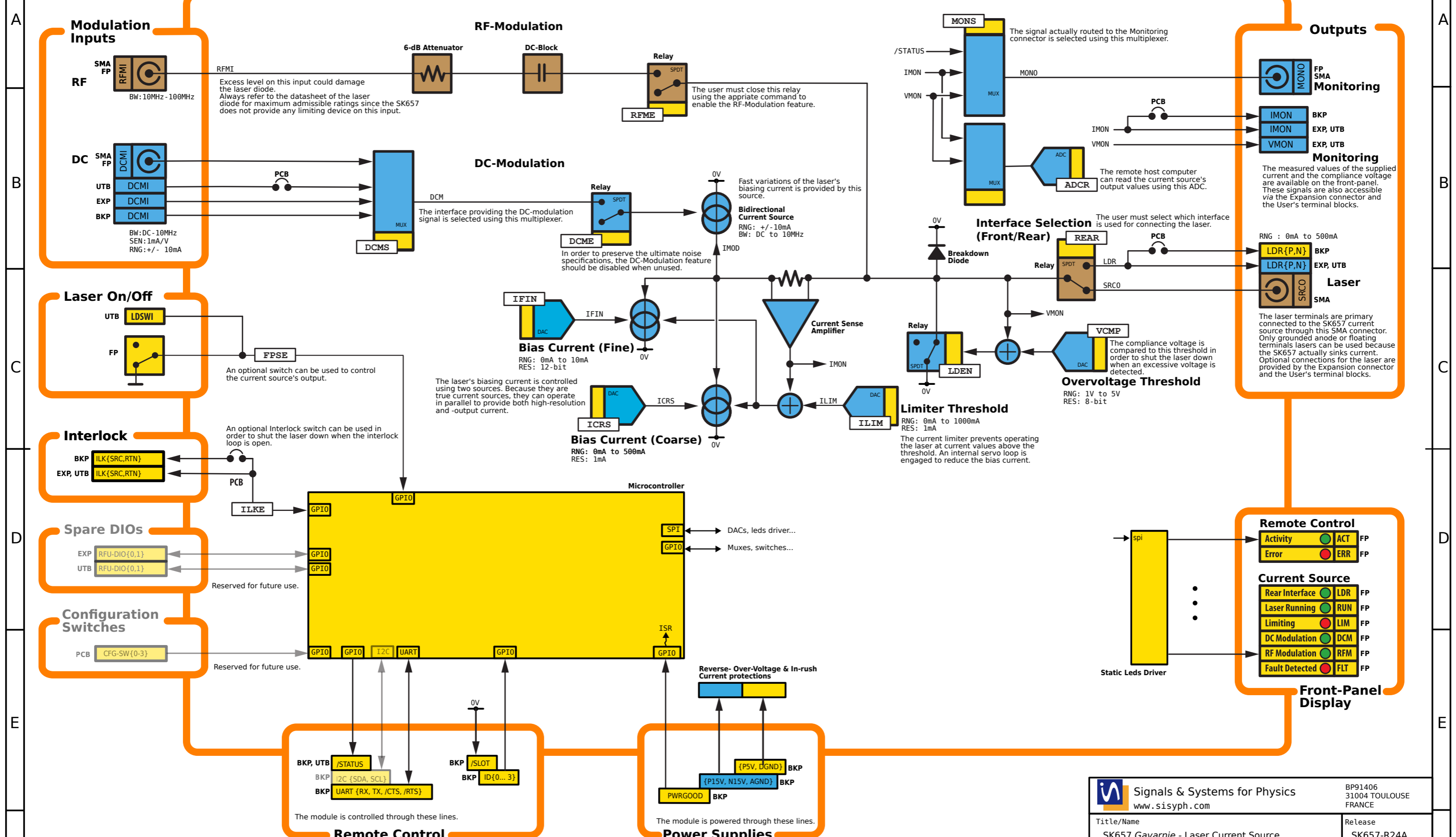


# SK657 Gavarnie - Laser Current Source



• Only main functionalities are represented. Refer to the *User's Guide* for detailed information.  
 • Refer to the *User's Programming Guide* for a complete description of the remote control commands.

Locations	
PCB	Printed circuit board
BKP	Backplane connector
UTB	User's terminal blocks
EXP	Expansion connector
FP	Front panel

Domains	
Optical	Optical
Digital	Digital
Analog	Analog
HF	HF

Sheet Size	A3	Sheet No.	1 of 1
APP'D By			
DRN By	GGB	Date	24-05-20
Name		Date	YY-MM-DD

Signals & Systems for Physics www.sisyph.com		BP91406 31004 TOULOUSE FRANCE
Title/Name SK657 Gavarnie - Laser Current Source		Release SK657-R24A
Description Functional block diagram.		
Drawing No. SK657-SG02-P24A		
THIS DOCUMENT IS THE PROPERTY OF SISYPH AND SHALL NOT BE REPRODUCED, DISTRIBUTED OR USED WITHOUT PRIOR WRITTEN PERMISSION FROM SISYPH.		